



FLORIDA DEPARTMENT OF TRANSPORTATION

Monthly Progress Report—April 2025

Loxahatchee Road Mobility Improvements Project

From the Arthur R. Marshall Loxahatchee National Wildlife Refuge to State Road (SR) 7/US 441

City of Parkland

Broward County, FL

Financial Project ID Number: 436564-1-52-01, 02, & 03

Construction Cost: \$33,480,584

Construction Start Date: October 30, 2023

Anticipated Completion: Early 2027

LOXAHATCHEE ROAD MOBILITY IMPROVEMENTS PROJECT MONTHLY PROGRESS REPORT—APRIL 2025

The City of Parkland, as the Project Sponsor, received funding through the Broward Metropolitan Planning Organization (MPO) and requested that FDOT design and construct the Loxahatchee Road Mobility Improvements Project through the City of Parkland Resolution Numbers 2016-510, 2021-011, and 2021-018.

UPDATE

Construction activities continue along the median and the closed sidewalk on Loxahatchee Road between N University Drive and Parkside Drive. Motorists should proceed with caution in the area. For safety reasons, cyclists and pedestrians are not permitted along this segment of the roadway at this time.

COMPLETED CONSTRUCTION ACTIVITIES

N University Drive and Parkside Drive:

- Completed installation of gravity wall caps

West of N University Drive to Bishop Pit Road:

- Completed excavation operations

ANTICIPATED CONSTRUCTION ACTIVITIES FOR APRIL 2025

N University Drive and Parkside Drive:

- Continue sidewalk installation
- Continue handrail installation along the sidewalk
- Continue driveway tie-in operations

West of N University Drive and Nob Hill Road:

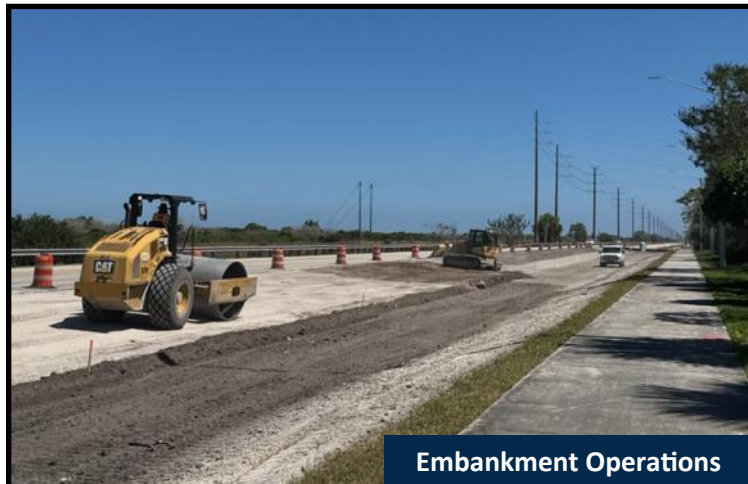
- Complete embankment installation for roadway widening and new swales
- Prepare and reinforce the road foundation by installing a stable base layer to improve durability before paving

CURRENT MAINTENANCE OF TRAFFIC (MOT)

- **Sidewalk Closure:** To ensure pedestrian safety, the sidewalk on Loxahatchee Road between N University Drive and Parkside Drive will be closed for sidewalk and handrail construction
- **Road Access:** Loxahatchee Road remains open in both direction to motorists—pedestrians and cyclists are not permitted on Loxahatchee Road at this time.
- **Speed Limit Enforcement:** Motorists are urged to adhere to posted speed limits. Law enforcement will be present throughout the construction period to monitor compliance and maintain safety.
- **Access West of N University Drive:** Access will be maintained at all times. Additional lane closures, traffic shifts, and detours may be implemented as needed for ongoing construction. Every effort will be made to minimize impacts, and all future closures will be communicated well in advance to keep the community informed.



Pedestrian Handrail Installation in the Eastbound Lane



Embankment Operations

As of Tuesday, April 1, 2025 the Loxahatchee Road Mobility Improvements Project is 46% completed. Additional information, flyers and progress photos can be found on the [project webpage](#).

Community feedback is at the core of all we do at FDOT, and we work with the public to balance the community vision with the community's transportation needs. This is routine on all our projects to ensure Florida's infrastructure is safe, resilient, and efficient for many years into the future.

FOR QUESTIONS, PLEASE CONTACT:

Tyler Furrey, P.E. — FDOT Project Manager

tyler.furrey@dot.state.fl.us or (954) 892-2362

Andres Penalzoza, P.E. — Project Administrator

apenalzoza@castilloeng.com or (305) 799-8819

Daniela Silva — Community Outreach Specialist

msilva@corradino.com or (786) 441-3088

Richard Biagini, P.E. — City of Parkland Engineer

rbiagini@cityofparkland.org or (954) 757-4171

WEB & SOCIAL MEDIA

X/Instagram: @MyFDOT_SEFL

Facebook: @MyFDOTSEFL

Project website: www.d4fdot.com



FLORIDA DEPARTMENT OF TRANSPORTATION MISSION STATEMENT

The Florida Department of Transportation's mission is to provide a safe statewide transportation system that promotes the efficient movement of people and goods, supports the state's economic competitiveness, prioritizes Florida's environment and natural resources, and preserves the quality of life and connectedness of the state's communities.

Please contact the Community Outreach Specialist, Daniela Silva, to be added to the project email notification lists. Public participation is solicited without regard to race, color, national origin, age, sex, religion, disability, or family status.

Updated: 3/31/2025